

# Panasonic

ideas for life

electronic board

UB-5320 UB-5820 UB-7320

## Panaboard™

### Metallic Type

Thermal Paper Printing



### USB Interface

Microsoft®  
Windows® 98,  
Windows® Me,  
Windows® 2000,  
Windows® XP  
operating systems

### Used for

Seminars  
Meetings  
Brain Storming  
Scheduling  
Training

## Panaboard takes notes instead of you Improves your Presentations and meetings

### Panaboard UB-5320, UB-5820, UB-7320

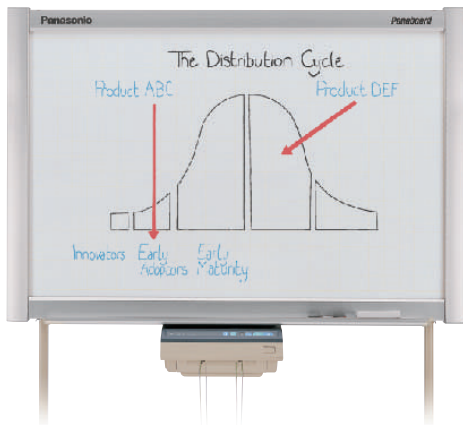
- Our range of Panaboards come with an integral printer for easy-operation.
- Panaboard can work as a PC printer.
- Panaboard can be controlled from PC.
- Panaboard keeps 100% audience attention and increases participation.
- Panaboard increases efficiency and reduces meeting time.
- Panaboard can be wall-mounted or used with floor-stand option.

# Panaboard™

Improves your Presentations and Meetings



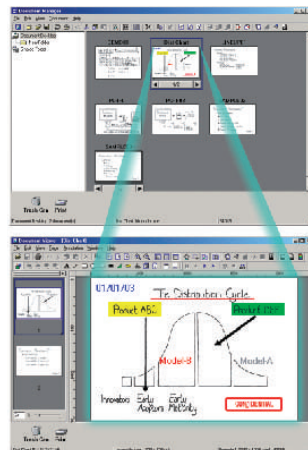
## PC Interface



## Panasonic Document Management System

Panaboard UB-5320, UB-5820 and UB-7320 come with utility software that consists of Document Manager and Document Viewer. The meeting contents on the Panaboard screen will become meeting minutes with some annotation by Document Viewer function. The Document Manager makes it easy to file and distribute the meeting minutes quite easily. Supported saving file format is BMP, TIFF, JPG, PNG and PDF.

The scanned image is monochrome. The annotation function is used to make the coloured text.



## Printer Driver

The Panaboard can also work as a PC printer. In a meeting, if you need to print out some documents, the Plug & Play of USB makes it easy to print out documents from the Panaboard.



1 Screen can also be used for the Projector. (UB-7320)

## TWAIN Driver



By just one click, you can scan the image on the Panaboard screen as image data to your computer and from your computer, you can control the

Panaboard function just like operating the Panaboard control panel.

## Specifications

General	Model number	UB-5320	UB-5820	UB-7320
Power Supply		AC 100 - 120 V, 50/60 Hz or AC 220 - 240 V, 50/60 Hz		
Power Consumption (Operational)		1.40 A (AC 100 - 120 V) or 0.75 A (AC 220 - 240 V)		
External Dimensions (Height X Width X Depth, without stand)		1,504 mm X 1,550 mm X 253 mm	1,504 mm X 1,912 mm X 253 mm	1,504 mm x 1,648 mm x 287 mm
Weight (without stand)		34.5 kg	37.0 kg	41.0 kg
<b>Input Block</b>				
Panel Dimensions (Height X Width)		900 mm X 1,400 mm	900 mm X 1,762 mm	900 mm X 1,400 mm
Panel Surface		2 (endless type)		
Copying Area (Height X Width)		850 mm X 1,330 mm	850 mm X 1,692 mm	850 mm X 1,330 mm
Scanning System		Image sensors		
<b>Output Block</b>				
Printing System		Thermal type		
Copy Paper		Heat-sensitive roll paper, Paper thickness: 65 um, Core diameter: 25.4 mm (1 inch) or more		
Copy Paper size		A4 or Letter		
Copy Density		203 dpi (8 dots/mm)		
Copy Color		Black		
Time Required for Copying		16 sec./sheet		
Continuous Copies		1 to 9		
Contrast Adjustment		Two levels : Normal/Dark		
2-screen Compressed Copying		Yes		No
<b>System Requirements</b>				
Computer		IBM® PC/AT or compatible machine with a CD-ROM drive		
CPU		Pentium® II or higher processor		
Interface		USB 1.1 or USB 2.0 (This electronic board functions with USB 1.1.)		
Operating System		Windows® 98, Windows® Me, Windows® 2000, Windows® XP		
Memory		Windows® 98/Me: 64 MB or more, Windows® 2000: 128 MB or more, Windows® XP: 256 MB or more		
Hard Disk		At least 40 MB free space (except saving space for image file)		
<b>Accessories</b>				
		• Operating instructions, Installation manual	• Power Cord	• Markers (black, red and blue, one each)
		• A4 or Letter Size Copy Paper Roll (10 m)	• Software CD-ROM	• Eraser (one pc.)
<b>Optional Equipment</b>				
Wall-Mounting Kit		KX-B063		
Stand		KX-B061		
<b>Separately Available</b>				
Copy paper		KX-B01 (1 roll/ 50 m), KX-B02 (1 roll/ 100 m),		
Markers		KX-B031 (set of 10 black markers), KX-B032 (set of 10 red markers), KX-B033 (set of 10 blue markers)		
Erasers		KX-B042 (set of 6 erasers)		
Marker and Eraser Set		KX-B035 (contains 1 black, 1 red and 1 blue markers and 1 eraser)		



UB-5320  
2-Screen Standard size



UB-5820  
2-Screen Wide size



UB-7320  
4-Screen Standard size  
(Stand option)

\*1 Screen can also be used for the Projector.

Note:  
 • Microsoft and Windows are either registered trademarks or trademarks of Microsoft Corporation in the United States and/or other countries.  
 • Windows is Microsoft® Windows® operating system.  
 • IBM is a registered trademark of International Business Machines Corporation.  
 • Pentium is a registered trademark of Intel Corporation in the U.S. and other countries.  
 • All trademarks referred to in this catalog are property of their respective companies.

<http://panasonic.co.jp/pcc/en/>  
<http://www.panasonic.co.jp/global>